



MIDDLE EAST AIRLINES GROUND  
HANDLING

On Ground We Take Over



**Cargo Center**

2023

# Overview

Cargo Center is built on 20,645m<sup>2</sup> landsite with hanger height over 12m. Safe, secure, clean and covered warehouse space with latest warehousing technology;

Maximized utilization of vertical warehouse space.

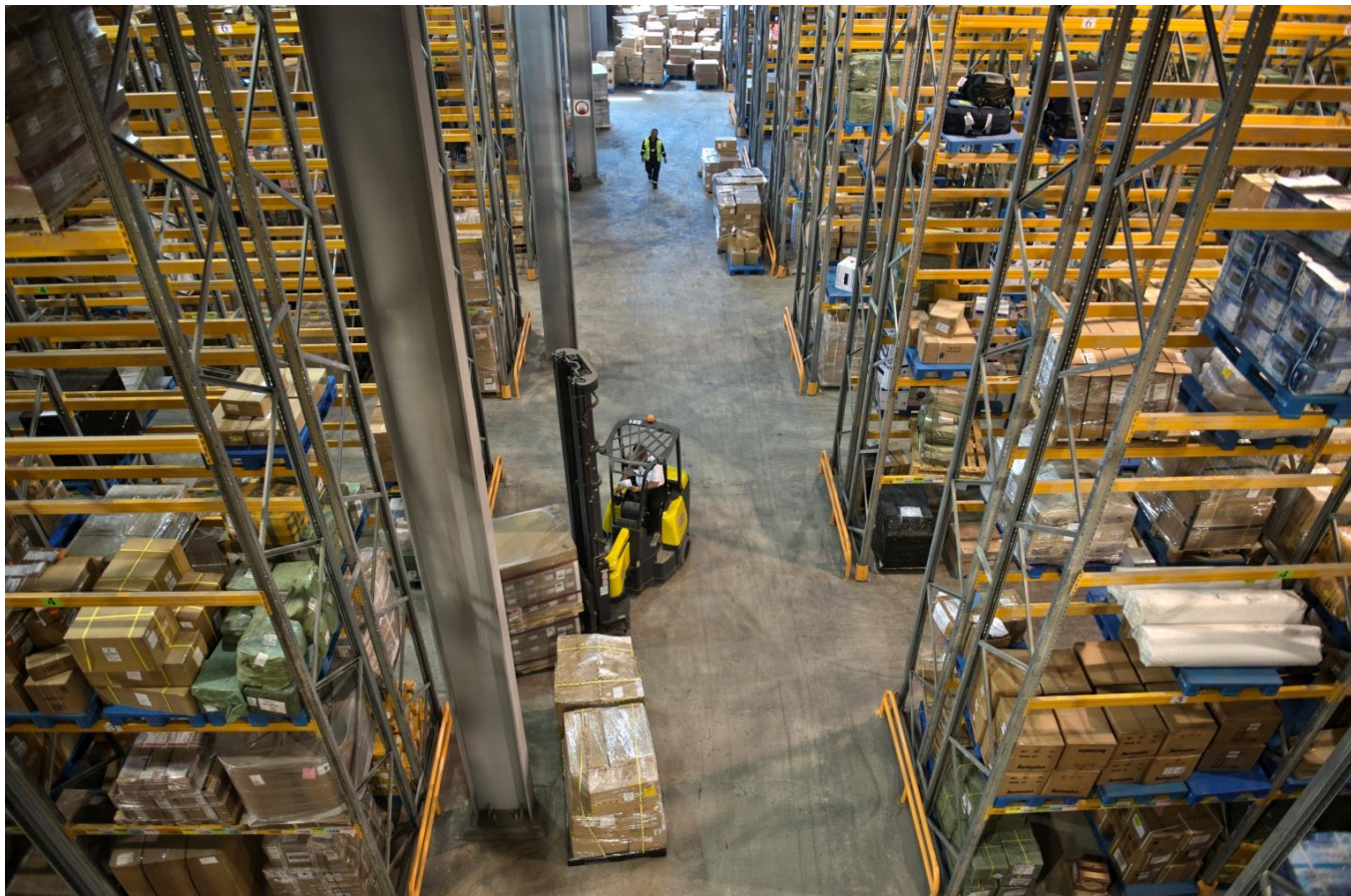
Office space for MEAG, Customs and other partners.

Power Supply: A powerhouse that includes 4 generators supplying 6,000KVA. This is in addition to a state-of-the-art UPS system and solar system of 2 MW of power.



# Space

	Import	Export +Transit	Total m3
Warehousing volume	12 000 m3	3000 m3	15 000m3
Additional space for handling of High cargo volume			7200 m2



# Refrigerators

15 cold stores of a volume of 3300m<sup>3</sup> ,including space for RKN plugs , are available at different temperature ranges for perishable goods, pharmaceuticals, meat, fruits and vegetables.



# Specifications

	Area in m3
<b>Export warehouse fridges</b>	
Refrigerator C5 (Perishable for EU/ UK ) +2° c to +8° c	73
Refrigerator C6(Pharma) +15° c to +25° c	109
Freezer (frozen meat + fish ,etc) -20° c to 0° c	109
Refrigerator C8(Perishables) Chocolates +15° c to +25° c	109
Refrigerator C9(Perishables) +2° c to + 8° c	54
Refrigerator C7 (Perishables on Pallets) +2° c to + 8° c	560
<b>Import warehouse fridges</b>	
Refrigerator C0 (Perishables) (DGR) +2° c to 8° c	73
Refrigerator C1 (Pharma ) 2° c to 8° c	291
Refrigerator C2 (Fruits/vegetables) 2° c to 8° c	109
Freezer (frozen meat + fish ,etc) -20° c to 0° c	345
Refrigerator C3(Perishables) +8° c to +10° c	209
Refrigerator C4 (Pharma ) +15° c to +25° c	504
<b>Import warehouse (basement) fridges</b>	
Refrigerator B0: +02 ° c / +08° c perishables	410m <sup>2</sup>
Refrigerator B1: +15° c / +25° c Pharmaceuticals	678m <sup>2</sup>
RKN ( Electrical Socket )	16 RKNs
<b>H/R fridge: +02 ° c / +08 ° c Human Remain</b>	

# Dedicated Areas



- Customs inspection Area .
- Covered and non covered dismantling area.
- Covered delivery area.
- Covered and non covered build up area.
- Import/Export Docking stations.
- Loading /unloading Area.
- Office space .
- Covered Parking .
- Imported /Exported Vehicle area (covered).

## Services:

- State of the art Cargo Handling systems including Mobile Data Management (MDM) IBS i-Cargo .
- Faster cargo retrieval and handling.
- Faster and more accurate business transactions
- About \$1.5M worth of equipment, such as:
  - Ten hydraulic docking systems for loading/unloading that accept any truck and container size
  - Articulated forklifts and other material handling equipment.
  - 4 export scales at 10-tons capacity each integrated with cargo system.
  - One 20-tons capacity scale at ramp/airside.
- Better process controls that will minimize lost/damage cargo.
- Better customer experience and environment .

# Security

- Surveillance system-CCTV: 360 cameras with advanced technology.
- Access control system throughout the facility.
- 2 Dual-View scanning machines, Brand name: Smiths Detection Hi-Scan 180180-2is Pro – year 2023
- 2 ETD , Brand name: Smiths Detection - IONSCAN 600 – Year 2023.
- Designated and controlled storage space at export area for Europe cargo.



- Dedicated Dangerous Goods (DG) area and Vulnerable Cargo area.
- Two fully enclosed and secured Valuable Rooms.
- A dedicated specially enclosed and sealed. Radioactive Material area.
- Fire Protection throughout the facility.
- Dedicated Security Force.
- BMS: (Building Management System), it controls and monitors all technical systems such as chillers, boilers, pumps, fans, electrical panels, and generators, it also provides user with a clear record of the status and operations of the entire systems. Records can be kept for 3 to 5 years.



# International Standards Certifications



- Systems and procedures are based on Lebanese Aviation Regulations (LAR).
- ISO9001-2015 Quality Management System standards.
- IATA Ground Handling Procedures (IGOM).
- IATA Safety Procedures (ISAGO)
- EU Security validation (RA3)
- TAPA Transported Asset Protection Association

## Cargo Center contacts

### Cargo Center Snr Director :

Mr. Wassim El Hout

Mob:+961 76 777460

Off:+961 1 622005

Fax:+961 1 623193

E-mail : [elhoutwa@meag.com.lb](mailto:elhoutwa@meag.com.lb)

### Head of Cargo Center Operation:

Mr Bassam Shaheen

Mob:+961 3636202

Off:+961 1 623231

E-mail : [shaheenb@meag.com.lb](mailto:shaheenb@meag.com.lb)

### Cargo Center Control Room:

Available 24/7

Off:+961 1 622721.

Email:[freight.controlroom@meag.com.l  
b](mailto:freight.controlroom@meag.com.lb)



**Please visit our website to  
check our services:**

**[www.meag.com.lb](http://www.meag.com.lb)**

